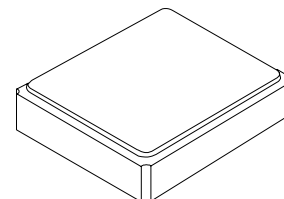




**XTL1021-1**

**16.00000 MHz  
Crystal Unit**



**SM3225-4 Case**

- High Performance Crystal for Wireless Communications Devices
- Excellent Frequency Stability and Reliability
- Ultra-Miniature Surface Mount Seam Weld Package
- Complies with Directive 2002/95/EC (RoHS)

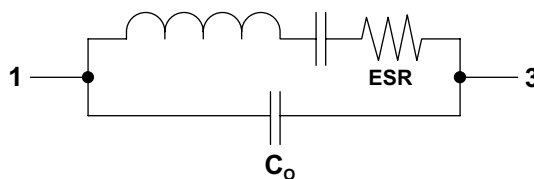


The XTL1021-1 is a very high stability 16.0 MHz crystal suitable for a wide range of communications applications. The XTL1021-1's excellent frequency stability supports operation from -10 to +60 °C.

### Electrical Characteristics

Characteristic	Sym	Notes	Minimum	Typical	Maximum	Units
Nominal Frequency	$F_O$			16.00000		MHz
Mode of Oscillation			Fundamental			
Storage Temperature Range			-40		+85	°C
Operating Temperature Range			-10		+60	°C
Frequency Stability over Operating Temperature Range			±10 ppm (referred to the value at 25 °C)			
Frequency Make Tolerance	$F_L$		±20 ppm @ 25 °C ±3 °C			
Equivalent Series Resistance	ESR				80	Ω
Shunt Capacitance	$C_O$				2	pF
Nominal Drive Level					10	μW
Load Capacitance	$C_L$			9		pF
Aging			±2.0 ppm/year @ 25 °C			
Standard Shipping Quantity on 330 mm (13") Reel				3000		units
Lid Symbolization (in addition to Lot and/or Date Codes)			1021-1 YWWS			

**Crystal Equivalent Circuit**



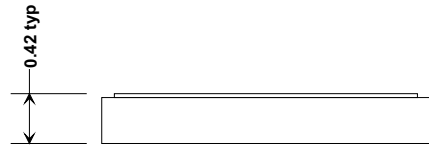
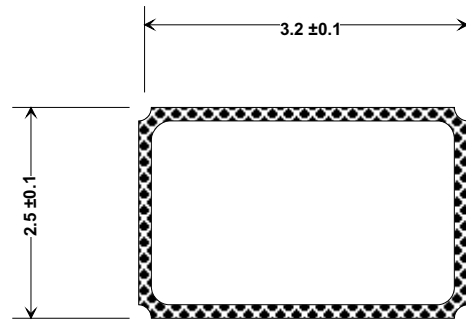
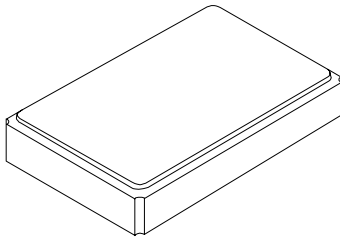
**CAUTION: Electrostatic Sensitive Device. Observe precautions for handling.**

### Notes:

1. US and international patents may apply.
2. The design, manufacturing process, and specifications of this device are subject to change without notice.
3. RFM, stylized RFM logo, and RF Monolithics, Inc. are registered trademarks of RF Monolithics, Inc.

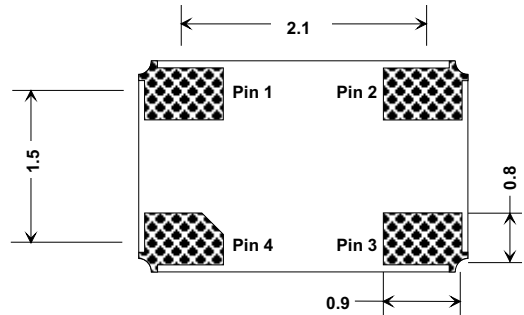
# 4-Terminal Surface-Mount Seam Weld Case

## 3.2 x 2.5 mm Nominal Footprint

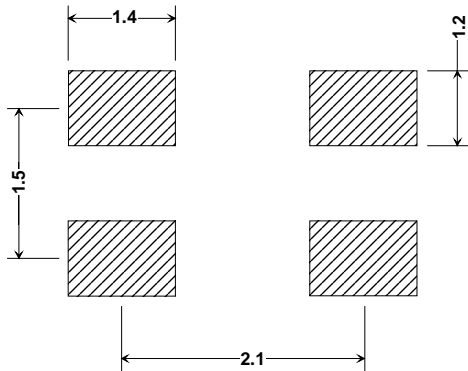


### Electrical Connections

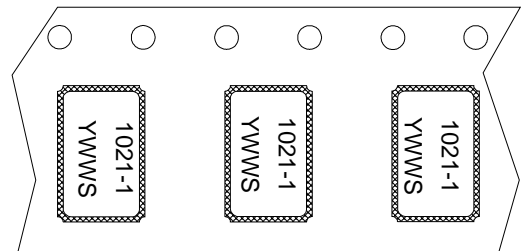
Pin	Connection
1	IN/OUT
2	GND
3	IN/OUT
4	GND



Package Dimensions (mm)

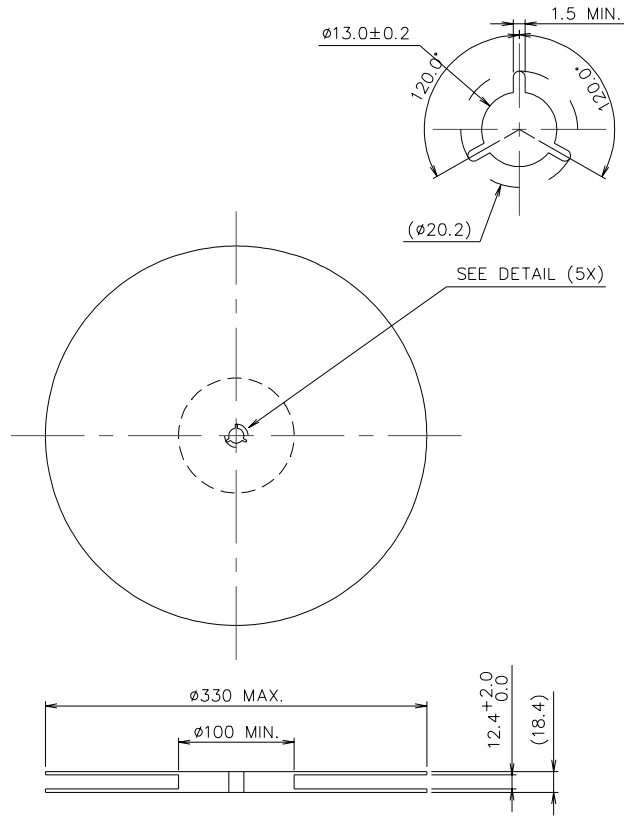


Footprint (mm)



Package Orientation in Carrier Tape

# Reel Dimensions



# Tape Dimensions

